

Model A91 Series

Self-Priming Swimming Pool Pump



The perfect solution for small in-ground and large above-ground pools, the A91 brings the self-priming and efficiency of an in-ground model down to an above-ground price.

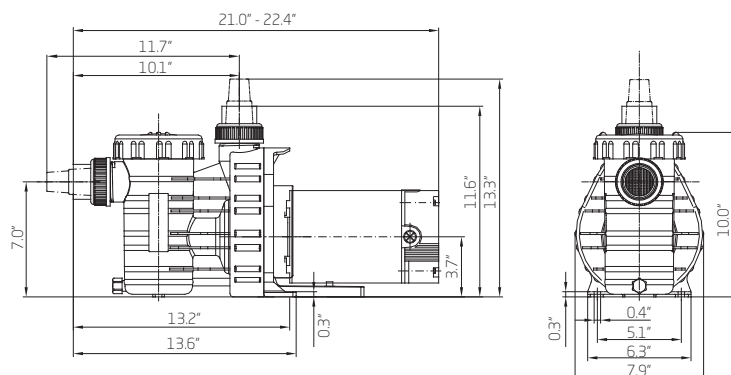
Features

- This high performance, medium head pump comes complete with an industry standard 200 seal for convenient replacement.
- Non-corrosive, chemical/UV resistant, and can withstand temperatures of up to 150°F.
- Suction and discharge ports are equipped with quick disconnect unions. Provided with a standard 1.5" slip and 1.5"/1.25" hose adaptor connections. Optional 1.5" NPT connections also available.
- Specially constructed clear lid with ring lock design is easy to open. Strainer basket is always locked in place.
- Pump is equipped with durable, 48 frame TEFC motor.
- Pump has a standard 3 ft. 3/12 AWG cord set pre-mounted. A variety of other cord sets are available.
- Every pump is performance tested before leaving the Speck factory.

Features Specific to the 1.1 THP Dual Voltage Motor

- Pump is equipped with a 1.1 THP (48 frame thru-bolt mount) Variable Speed Motor.
- Pump motor runs on a wide voltage range 100-130/200-250V (without switching).
- Built-In Controller, LED Screen & Keypad can be locked for safety.
- 3 Adjustable Power Levels - Levels can be set to range from 50 Watts/1000 RPM to 1000 Watts/3500 RPM (in increments of 10 Watts).
- Programmable high efficiency TEFC (totally enclosed fan cooled) maintenance free permanent magnet brushless 48 frame motor.

Dimensional Drawing



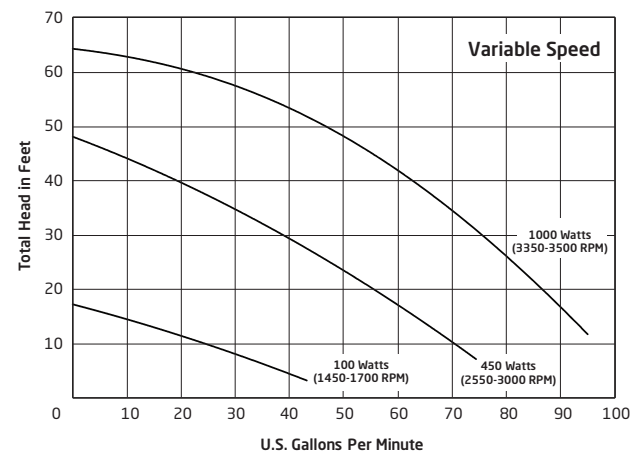
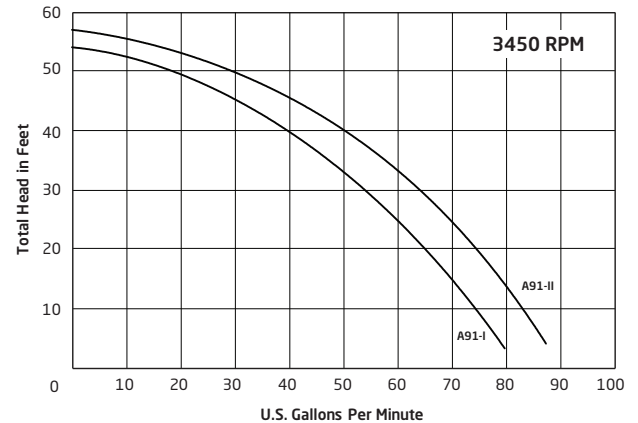
Model A91-II (1.0 THP)

Trademarks and Certifications



Select A91 models are ENERGY STAR certified

Performance Curves



Model A91 Series

Self-Priming Swimming Pool Pump

SPECK X

Part Numbers



Above-Ground Models w/ 3' Standard Cord

Order #	Model #	THP	WEF	HHP	Volts	Amps	Speed	Weight* lbs
AG211-1075T-OST	A91-I	0.75	4.2	0.408	115	7.0	single	27
AG211-1100T-OST	A91-II	1.0	3.9	0.554	115	9.5	single	27



Variable Speed - Energy Star

Order #	Model #	THP	WEF	HHP	Volts	Amps	Cord Set	Weight* lbs
IG215-V100T-000	A91-II	1.1	10.9	0.607	115-230	12.0-8.5	no cord	24
AG215-V100T-OST	A91-II	1.1	10.9	0.607	115-230	12.0-8.5	3' standard	24
AG215-V100T-OTL	A91-II	1.1	10.9	0.607	115-230	12.0-8.5	3' twist-lock	24

*Estimated ship weight